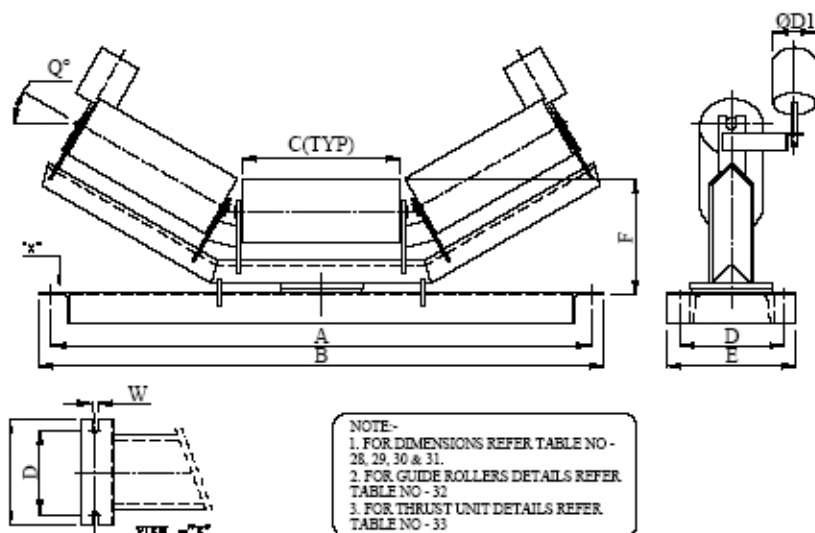


# GENERAL ARRANGEMENTS OF THREE PIECE S.A. CARRYING IDLER SET



## DIMENSIONS FOR THREE PIECE S.A. CARRYING IDLER SET

### TYPE 1 - BOTTOM FRAME WITH CHANNEL

TABLE - 28 (T 28) KL - SERIES									TABLE - 30 (T 30) KH - SERIES								
FOR IDLER DIA - Ø63.5, Ø76.1 & Ø88.9									FOR IDLER DIA - Ø114.3, Ø127, Ø139.7, Ø152.4, Ø159, Ø165.1 & Ø168.3								
Q° = 5°, 10°, 15°, 20°, 25°, 30°, 35°, 40° & 45°									Q° = 5°, 10°, 15°, 20°, 25°, 30°, 35°, 40° & 45°								
SL.NO	B.W	A	B	C	D	E	F	W	SL.NO	B.W	A	B	C	D	E	F	W
1	300	590	655	125	200	250		14	1	500	790	855	200	200	250		14
2	400	690	755	160	200	250	175 (Ø63.5)	14	2	650	940	1000	250	200	250		14
3	500	790	855	200	200	250	200 (Ø76.1, Ø88.9)	14	3	800	1090	1150	315	200	250	275 (Ø114.3 & Ø127)	14
4	650	940	1000	250	200	250		14	4	1000	1290	1350	380	200	250	300 (Ø139.7 & Ø152.4)	14
5	800	1090	1150	315	200	250		14	5	1200	1490	1560	465	200	250	310 (Ø159)	18
									6	1400	1690	1750	530	200	250	325 (Ø165.1 & Ø168.3)	18
									7	1600	1900	1950	600	200	250		18
TABLE - 29 (T 29) KM - SERIES									TABLE - 31 (T 31) KE - SERIES								
FOR IDLER DIA - Ø88.9, Ø101.6, Ø114.3, Ø127 & Ø139.7									FOR IDLER DIA - Ø152.4, Ø159, Ø165.1, Ø168.3, Ø193.7 & Ø219.1								
Q° = 5°, 10°, 15°, 20°, 25°, 30°, 35°, 40° & 45°									Q° = 5°, 10°, 15°, 20°, 25°, 30°, 35°, 40° & 45°								
SL.NO	B.W	A	B	C	D	E	F	W	SL.NO	B.W	A	B	C	D	E	F	W
1	400	690	755	160	200	250		14	1	1200	1490	1560	465	200	250		18
2	500	790	855	200	200	250	225 (Ø88.9)	14	2	1400	1690	1750	530	200	250	310 (Ø152.4)	18
3	650	940	1000	250	200	250	250 (Ø101.6 & Ø114.3)	14	3	1600	1900	1950	600	200	250	325 (Ø159, Ø165.1 & Ø168.3)	18
4	800	1090	1150	315	200	250	275 (Ø127 & Ø139.7)	14	4	1800	2100	2150	670	200	250	350 (Ø193.7)	22
5	1000	1290	1350	380	200	250		14	5	2000	2300	2350	740	200	250	375 (Ø219.1)	22
6	1200	1490	1560	465	200	250		18	6	2400	2700	2750	870	200	250		22

"Special Types and Dimensions on Request"

"All Dimensions are in mm"