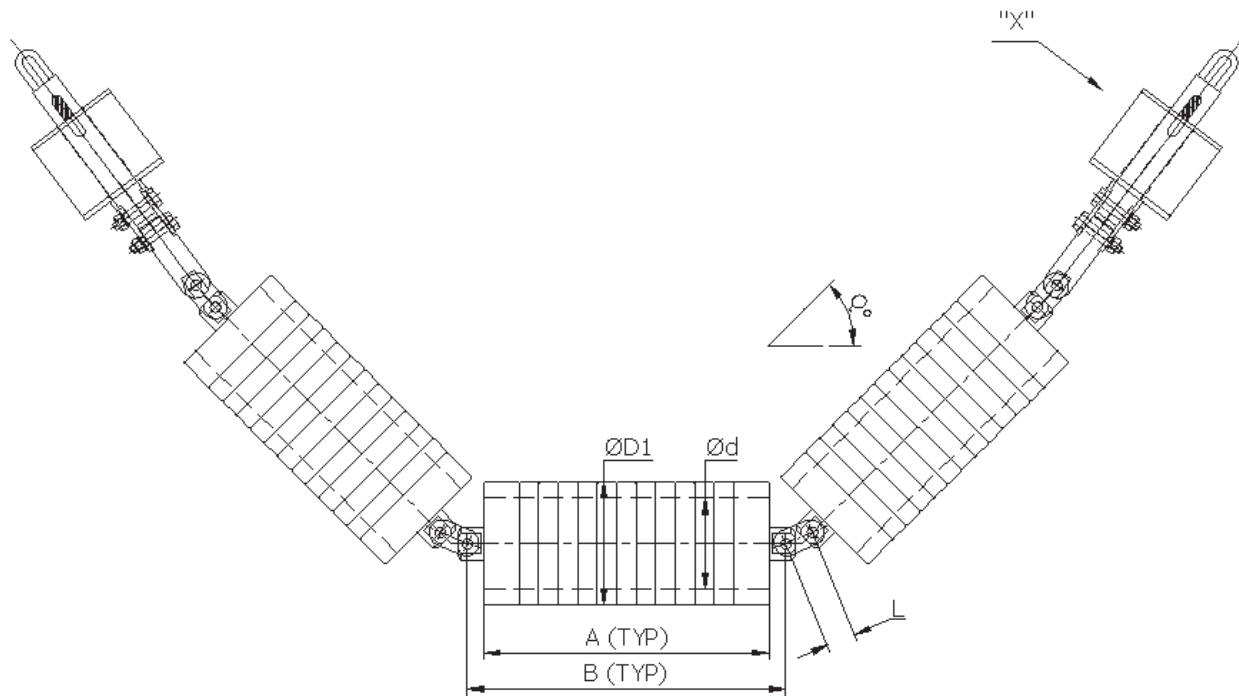


# THREE PC IMPACT GARLAND IDLER SET



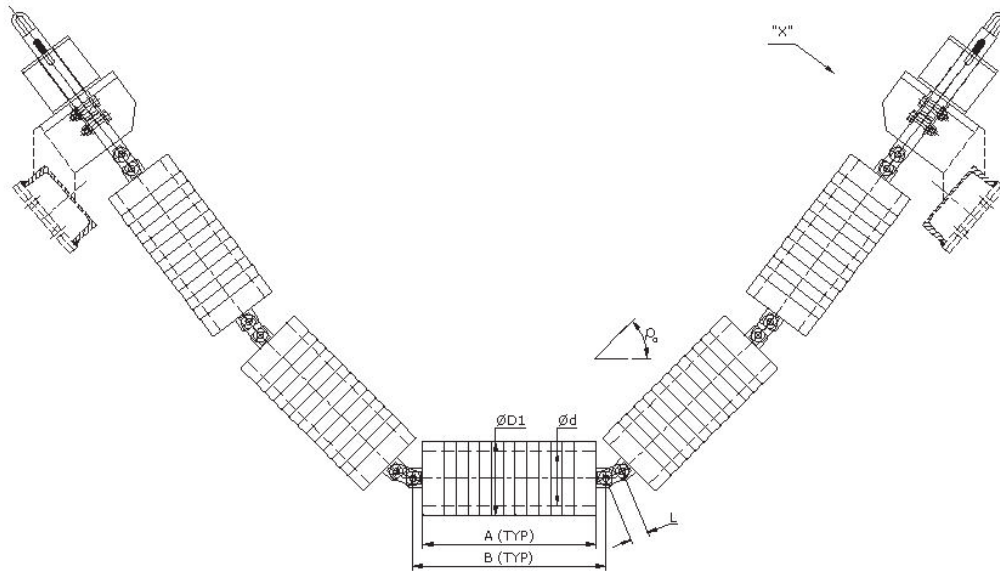
NOTE :-

1. FOR DIMENSIONS REFER TABLE NO - 60 & 61
2. FOR DIM "ØD1" REFER TABLE NO - 18

TABLE - 60 (T 60)				KH - SERIES	
FOR IDLER DIA - Ø114.3, Ø127, Ø139.7, Ø152.4, Ø159, Ø165.1 & Ø168.3					
Q° = 5°, 10°, 15°, 20°, 25°, 30°, 35°, 40° & 45°					
SL. NO	B.W	A	B	L	
1	500	200	250	44	
2	650	250	300	44	
3	800	315	365	44	
4	1000	380	430	44	
5	1200	465	515	44	
6	1400	530	580	44	
7	1600	600	650	44	

TABLE - 61 (T 61)				KE - SERIES	
FOR IDLER DIA - Ø152.4, Ø159, Ø165.1, Ø168.3, Ø193.7 & Ø219.1					
Q° = 5°, 10°, 15°, 20°, 25°, 30°, 35°, 40° & 45°					
SL. NO	B.W	A	B	W	
1	1200	465	515	44	
2	1400	530	580	44	
3	1600	600	650	44	
4	1800	670	720	44	
5	2000	740	790	44	
6	2400	870	920	57 / 89	

# FIVE PIECE IMPACT GARLAND IDLER SET



- NOTE :-
1. FOR DIMENSIONS REFER TABLE NO - 62 & 63
  2. FOR DIM "ØD1" REFER TABLE NO-18

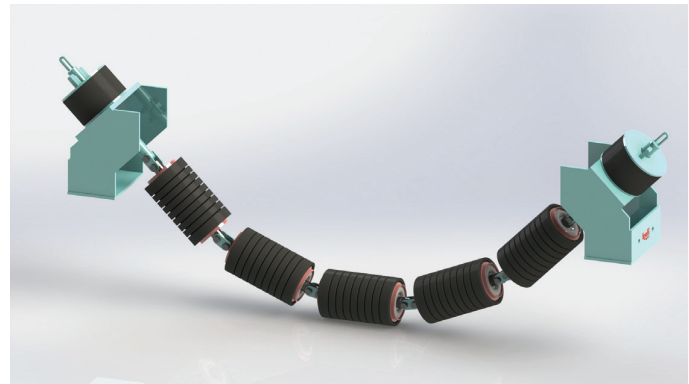


TABLE - 62 & 63 ( T62 & 63 )				KE - SERIES	
FOR IDLER DIA - Ø152.4, Ø159, Ø165.1, Ø168.3, Ø193.7 & Ø219.1					
Q° = 5°, 10°, 15°, 20°, 25°, 30°, 35°, 40° & 45°					
SL. NO	B.W	A	B	W	
1	1200	280	330	44	
2	1400	320	370	44	
3	1600	360	410	44	
4	1800	400	450	44	
5	2000	440	490	57 / 89	
6	2400	520	570	57 / 89	